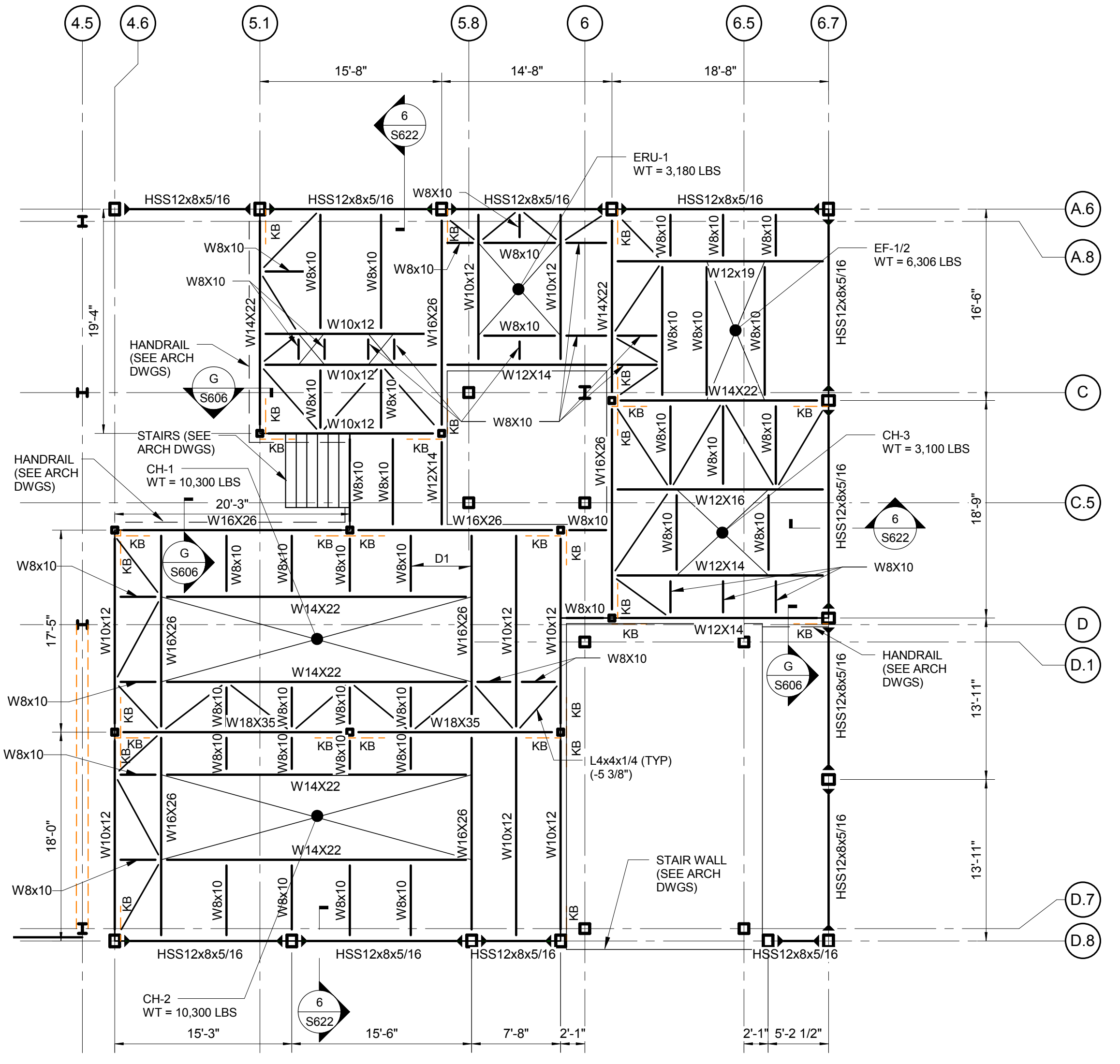


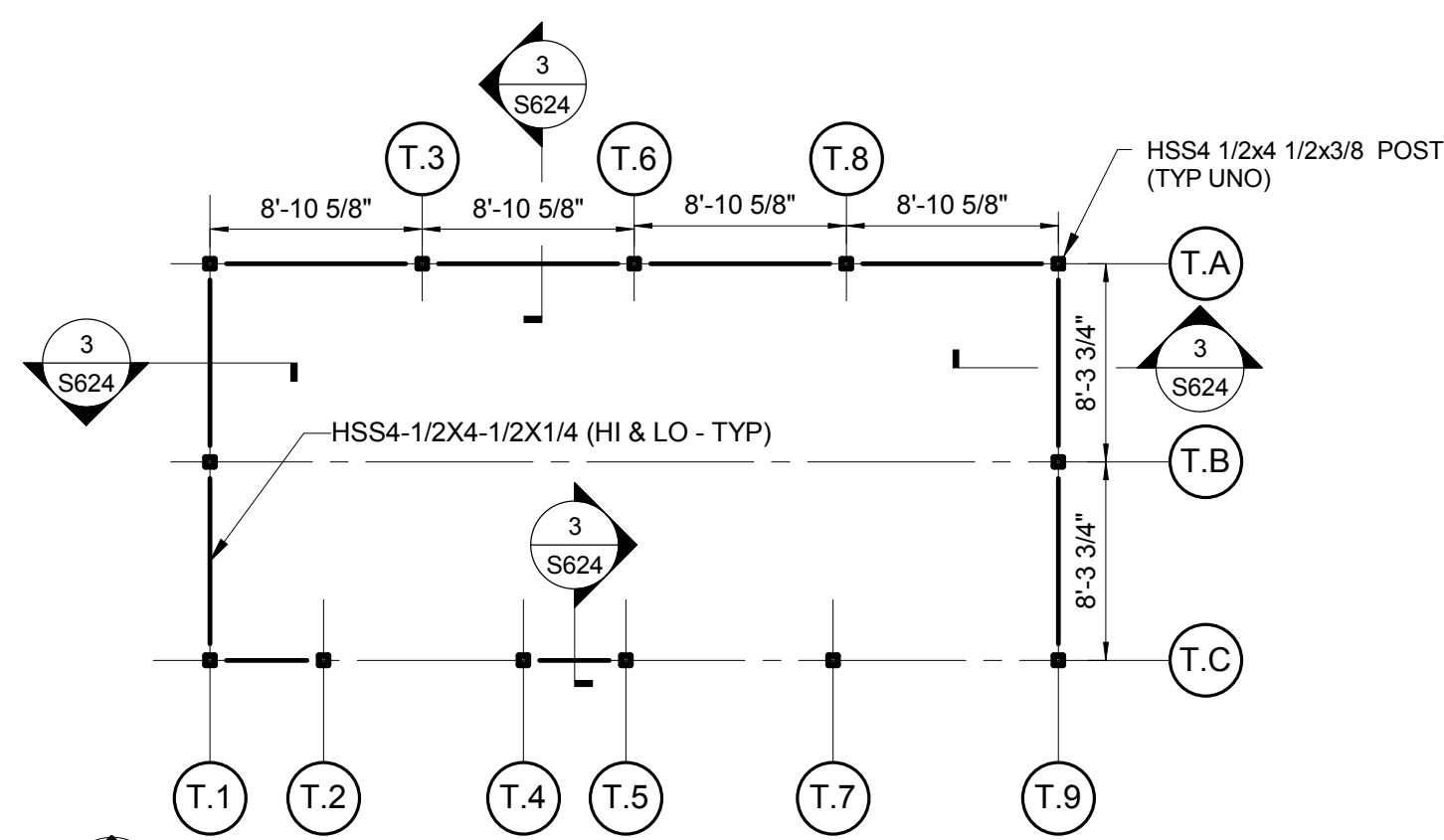
**EMERGENCY GENERATOR ENCLOSURE HIGH FRAMING**  
SCALE: 1/8" = 1'-0"

- TOP OF STEEL ELEVATION = + 15'-0" FOR HI BEAMS, + 8'-2" FOR INTERMEDIATE BEAMS, & + 1'-4" FOR LO BEAMS (TYP UNO).
- SEE DRAWINGS S001 & S002 FOR STRUCTURAL NOTES.
- SECTIONS SHOWN ON PLAN APPLY TO SIMILAR CONDITIONS THROUGHOUT THE BUILDING.
- ALL STEEL SHALL BE GALVANIZED.
- ALL BEAM CONDITIONS SHALL BE HI, INTERMEDIATE, AND LO UNLESS NOTED OTHERWISE ON PLAN.
- CONFIRM ALL TOS ELEVATIONS AND POST LOCATIONS WITH FINAL ARCHITETURAL AND MECHANICAL DRAWINGS.



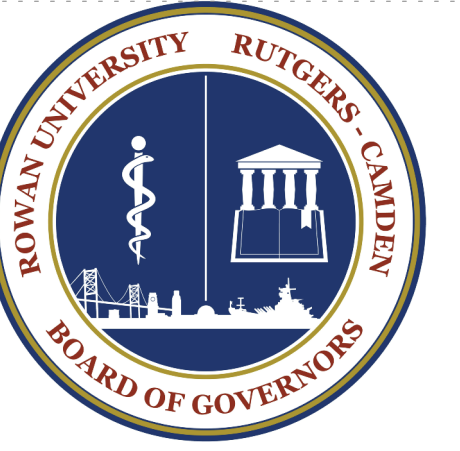
**MECHANICAL EQUIPMENT PLATFORM**  
SCALE: 1/8" = 1'-0"  
DESIGN LIVE LOAD = 100 PSF

- FINISH FLOOR ELEVATION = + 6'-0" (TYP UNO).
- TOS ELEVATION -1.38" BELOW FINISH FLOOR ELEVATION (TYP UNO).
- D1 DENOTES BEAM TO COLUMN LATERAL MOMENT CONNECTION. SEE DETAIL C1607.
- 4 DENOTES SPAN OF 1 3/8" TYP WB GALVANIZED METAL BAR GRATING.
- SEE DRAWINGS S001 & S002 FOR STRUCTURAL NOTES.
- ATTACH GRATING TO FLANGE OF STEEL BEAMS WITH HOT DIPPED GALVANIZED FASTENERS TYPE 304 GR UNF BY HILTI OR APPROVED EQUAL. FASTENING PATTERN SHALL BE FOUR AT EACH END OF GRATING AND TWO ATTACHMENTS AT INTERMEDIATE BEAM SUPPORT PER 4'-0" WIDTH OF GRATING.
- SECTIONS SHOWN ON PLAN APPLY TO SIMILAR CONDITIONS THROUGHOUT THE BUILDING.
- ALL PLATFORM STEEL SHALL BE GALVANIZED.
- ALL BEAMS ARE EQUALLY SPACED (TYP UNO).
- CONFIRM DIMENSIONS AND LOCATIONS OF EQUIPMENT WITH ARCHITECTURAL, MECHANICAL, AND EQUIPMENT VENDOR FINAL DRAWINGS.
- KB DENOTES 2-1/4x1/4 KNEE BRACE. SEE DETAIL D15824.
- FOR TYPICAL DUCT/PIPE SUPPORT SEE DETAIL F15824. ALL DUCT/PIPE SUPPORT STEEL SHALL BE GALVANIZED. REFER TO THE DIVISION 23 DESIGN DRAWINGS ("M" SERIES) FOR THE LAYOUT OF MECHANICAL EQUIPMENT IN THE OPEN WELL ON THE ROOF. THE MAXIMUM SPACING OF THE PIPE/DUCT SUPPORTS SHALL NOT EXCEED 8 FEET. COORDINATE THE EXACT LOCATIONS OF THE SUPPORTS WITH THE DIVISION 23 INSTALLING CONTRACTORS.



**TRANSFORMER ENCLOSURE HIGH FRAMING**  
SCALE: 1/8" = 1'-0"

- TOP OF STEEL ELEVATION = + 7'-0" FOR HI BEAMS & + 1'-0 1/2" FOR LO BEAMS (TYP UNO).
- SEE DRAWINGS S001 & S002 FOR STRUCTURAL NOTES.
- SECTIONS SHOWN ON PLAN APPLY TO SIMILAR CONDITIONS THROUGHOUT THE BUILDING.
- ALL STEEL SHALL BE GALVANIZED.
- ALL BEAM CONDITIONS SHALL BE HI AND LO UNLESS NOTED OTHERWISE ON PLAN.
- CONFIRM ALL TOS ELEVATIONS AND POST LOCATIONS WITH FINAL ARCHITETURAL AND MECHANICAL DRAWINGS.



Project:  
**JOINT HEALTH SCIENCES CENTER**

Prepared For:  
Rowan University - Rutgers Camden  
Board of Governors  
200 Federal Street, Suite 300  
Camden, NJ 08103  
Contract No: 16.07011.00



HOK  
One Logan Square, Suite 1510  
Philadelphia, PA 19103 USA  
T +1 215 940 3570 F +1 215 940 3571

All reproduction & intellectual property rights reserved © 2016



J. F. McKernan Jr. Architects & Assoc., LLC  
100 Doolen Lane, Suite 204  
Cherry Hill, NJ 08034



R.G. Vanderweil Engineers, LLP  
101 Groves Mill Road  
Lawrenceville, NJ 08648



Michael A. Beach & Associates  
205 Birchfield Drive  
Mount Laurel, NJ 08054

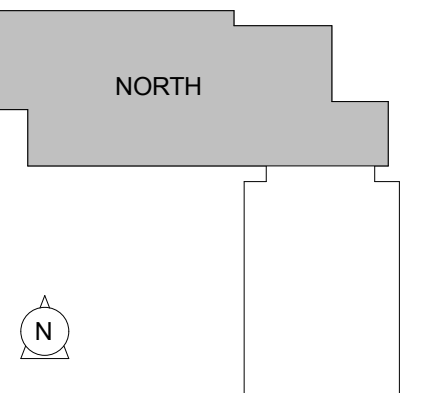


Pennoni  
515 Grove Street, Suite 18  
Haddon Heights, NJ 08035



Colin Gordon Associates  
150 N. Hill Dr., Suite 115  
Brisbane, CA 94005

Key Plan



Professional Seal: **MICHAEL A. BEACH**  
PROFESSIONAL ENGINEER  
NJ LIC. NO. 24GE03101500

No.	Description	Date
2	ADDENDUM #2	08/16/17

Drawn by: PBI  
Project No: 16.07011.00  
Reviewed by: MAB

**ADDENDUM #2 - 08-18-2017**

Sheet Title  
**FRAMING PLAN - MISCELLANEOUS FRAMING**

**MICHAEL A. BEACH & ASSOCIATES, LLC**  
CONSULTING STRUCTURAL ENGINEERING  
TWIN PONDS EXECUTIVE CAMPUS  
205 BIRCHFIELD DRIVE  
MOUNT LAUREL, NEW JERSEY 08054  
PH: (856) 273-1909 FAX: (856) 273-1480  
EMAIL: ma@mabeachassoc.com  
NJ CERTIFICATE OF AUTHORIZATION # 24GA27962200  
MAB PROJ. NO. 747.106

Original drawing is 42 x 30. Do not scale contents of this drawing.

Sheet Number

**S304**