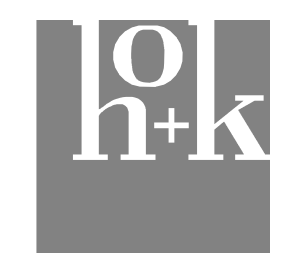




Project:
JOINT HEALTH SCIENCES CENTER

Prepared For:
Rowan University - Rutgers Camden
Board of Governors
200 Federal Street, Suite 300
Camden, NJ 08103
Contract No: 16.07011.00



HOK
One Logan Square, Suite 1510
Philadelphia, PA 19103 USA
t +1 215 940 3570 f +1 215 940 3571

All reproduction & intellectual property rights reserved © 2016

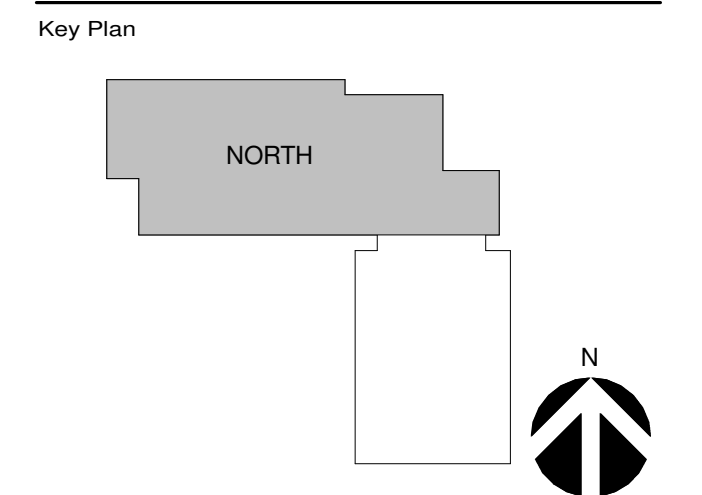
In Association with:
McKernan Architects
J.F. McKernan Jr. Architects & Assoc. LLC
105 Doober Lane, Suite 204
Cherry Hill, NJ 08034

VANDERWEIL
R.G. Vanderweil Engineers, LLP
101 Groves Mill Road
Lawrenceville, NJ 08648

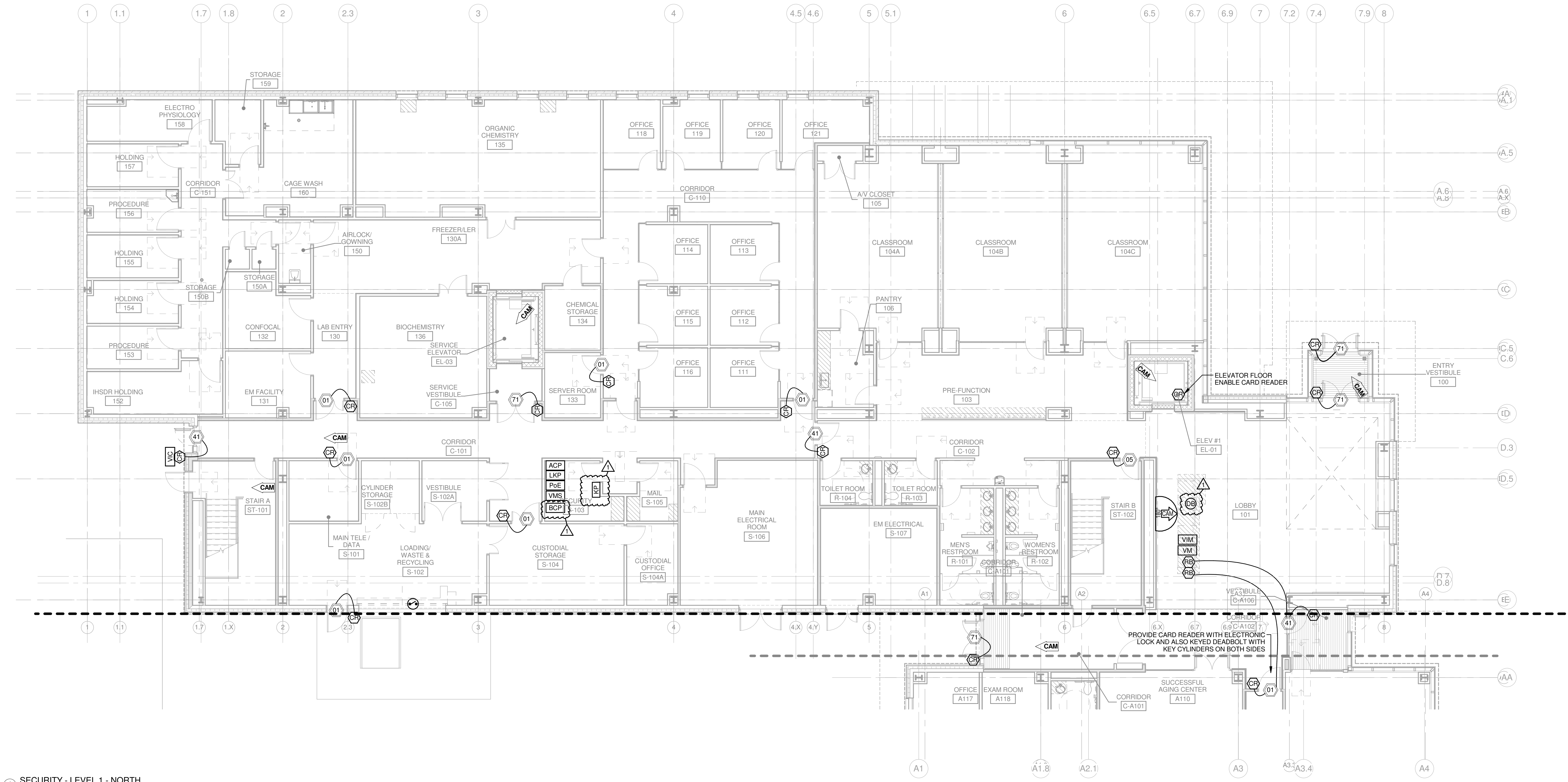
Michael A. Beach & Associates
Michael A Beach & Associates
205 Birchfield Drive
Mount Laurel, NJ 08054

Pennoni
Pennoni
515 Grove Street, Suite 1B
Haddon Heights, NJ 08035

cga
Colin Gordon Associates
150 N. Hill Dr., Suite 115
Brisbane, CA 94005



Professional Seals



1 SECURITY - LEVEL 1 - NORTH
1/8" = 1'-0"

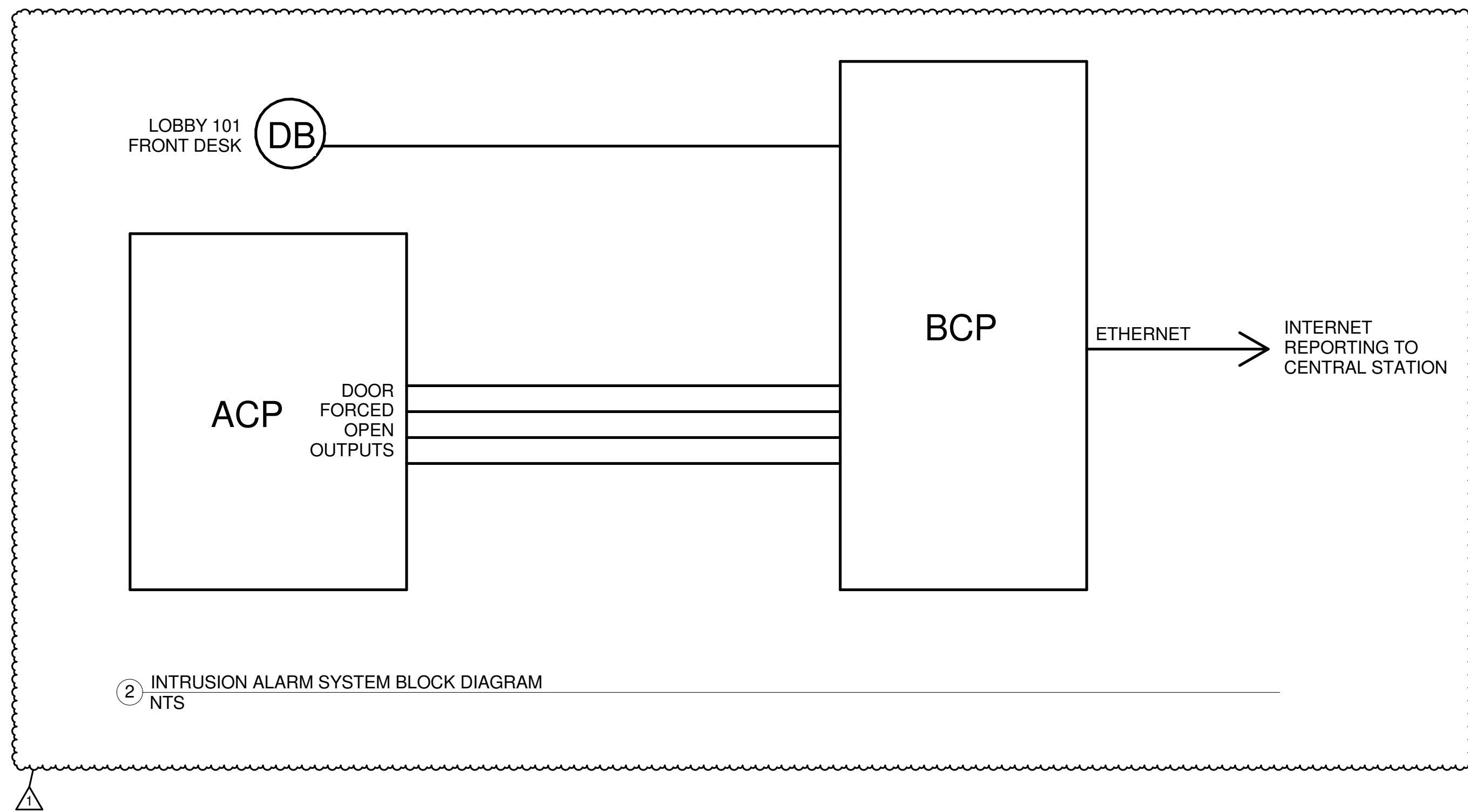
No.	Description	Date
1	ADDENDUM #2	08/18/17

Drawn by: KP Reviewed by: RL
Project No: 16.07011.00

ADDENDUM #2 - 08-18-2017
Sheet Title
SECURITY PLAN - LEVEL 1 - NORTH

Original drawing is 42 x 30. Do not scale contents of this drawing.

Sheet Number
SE201N



ACCESS CONTROL SYSTEM HARDWARE:

ITEM	DWG	EQUIPMENT	MANUFACTURER	MODEL
AC1	CR	Multi-Technology Prox/Smart DESFire EV1 Card Reader with Magstripe	Aptiq	MTMS15
AC2		Smart Credential - DESFire EV1 Key Fob with 4K byte available memory	Aptiq	8640
AC3		Electrified Door Locking Hardware (provided by Division 8)	Securtron, HES, VonDuprin, Locknetics, or equivalent	as required by door style, coordinate with locksmith
AC4		Magnetic Door Contact Switch, Recessed-Mount, Double-Pole, Normally-Closed Glass Reed (for doors with access control)	Sentrol or equivalent	1076D double pole, or equivalent
AC5	ACP	Access Control System, LAN-connected, web-browser Linux-based, Wall-mounted Enclosure	S2 Security	NetBox Extreme Wall Mount S2-EXT-16-WM
AC6		Composite Cable from access panel to doorway	Windy City Wire	Composite cable 4461030S or equivalent
AC7		Ethernet Network Switches, patch panels, patch cords, cabling, jacks for security network	Etherwan	or equivalent
AC8	LKP	Door Lock Power Supply, 16 door, with FAI and individual FS or FSE assignment per door, for doors without latch-retraction locking. With 24V 7AH Battery	Altronix	Maximal 33FD
AC9	RB	Door Release Button, desktop mounted	Rutherford Controls	909S-MO
AC10	ACW	Access Control Workstation, with Linux CPU, Keyboard, Mouse, and 23" Desktop Monitor	Dell or equivalent	TBD

CLOSED-CIRCUIT TELEVISION (CCTV) SYSTEM HARDWARE:

ITEM	DWG	EQUIPMENT	MANUFACTURER	MODEL
CC1	TYPE1	Interior Fixed-View IP Camera, Ceiling Flush-Mount, 2 MP Color, Remote Focus, WDR, masked dome, 3mm - 9mm, Auto-Iris Lens, 6W PoE.	Axis Communications	Q3505-V MkII 9mm, with ceiling kit No. T94K01L
CC2	TYPE2	Interior Fixed-View IP Camera, Surface-Mount, 2 MP Color, Remote Focus, WDR, masked dome, 3mm - 9mm, Auto-Iris Lens, 6W PoE.	Axis Communications	Q3505-V MkII 9mm
CC3	TYPE 3	Exterior Panoramic 180/270/360-Degrees Dome Camera, 4-Imager, 12MP, Remote Focus, WDR, Day-Night, with pendant, with wall mount, with pole mount. PoE and Auxiliary Power.	Arecont	AV12276DN-28, with SO-CAP, with AV-WMJB, with AV-PMA
CC4		Media Converter for exterior pole-mounted cameras	Nitek	MC721MG-1
CC5		Multimode Fiber for exterior pole-mounted cameras	Corning	TBD
CC6	TYPE 4	Interior Elevator Car Ceiling Subminiature 2.5" Dome Analog Camera, 720TVL, 12V DC 1.2W.	Bosch	FLEXIDOME AN Micro 1000
CC7		IP Encoder for Analog Elevator Camera	Axis	M7014, part No. 0415-004
CC8		Camera Cable, 4-pair #24 CAT-5E, plenum jacketed	Belden	1701A
CC9		Data Patch Panel, 24-port, RJ-45F (front) to 110 punch terminals (back), with patch cables	Ortronics or equivalent	
CC10	PoE	Data Switch with PoE	Etherwan	
CC11	VMS	IP Camera NVR/Server/Storage, Linux-based, loaded with video recording software	S2 Security	NetVR 400
CC12	VMC	Video Management System Client Workstation with mouse	S2 Security	Magic Monitor Brick S2-MMB, USB mouse
CC13	VMC	32" Curved Desktop Security Monitor	Dell	U3417W

VIDEO INTERCOM SYSTEM HARDWARE:

ITEM	DWG	EQUIPMENT	MANUFACTURER	MODEL
IC1	VIM	Video Intercom Master Station, Desktop.	Aliphone or equivalent	AX-8MV
IC2	VIC	Video Intercom Sub Station - Vandal-Resistant flush mount panel	Aliphone or equivalent	AX-DVF
IC3		Intercom System Central Exchange	Aliphone or equivalent	AX-084C
IC4		Door Release Relay, 24V DC	Aliphone or equivalent	RY-24L
IC5		Power Supply	Aliphone or equivalent	PS-2420UL
IC6		Cable, 2-Conductor, #22, Shielded	Aliphone or equivalent	B22202 or equivalent
IC7		Cable, 4-Pair, #24, Unshielded	Belden or equivalent	CAT-5e

INTRUSION DETECTION SYSTEM HARDWARE:

ITEM	DWG	EQUIPMENT	MANUFACTURER	MODEL
IN1	PIR	PIR Motion Detector, Ceiling Mounted 360° pattern	Pulnix or equivalent	PA-6810E or equivalent
IN2		Magnetic Door Contact Switch, Recessed-Mount, Single-Pole, Normally-Closed Glass Reed (for intrusion-only doors)	Sentrol or equivalent	1078C single pole, or equivalent
IN3	GB	Glassbreak Detector	IntelliSense or equivalent	FG1525R or equivalent
IN4	BCP	Intrusion System Control/Communicator, expandable to 96 Zones, with Internet Communicator, with Output Relay Module.	NAPCO or equivalent	GEMINI P9600 or equivalent with zone expansion modules, with RB3008 Relay Board, with NetLink NL-MOD internet reporting option.
		Note: Wire as individual zones per doorway or detector		
IN5	KP	Intrusion System Keypad, Custom LCD	NAPCO or equivalent	RP1CA2 or equivalent
IN6	DB	Duress Pushbutton, Latching	Dortronics	5211-MP23/KR

NOTES:

- COORDINATE WITH OWNER TO GENERATE ACCESS LEVELS AND INITIAL CARD PROGRAMMING.
- PROGRAM SYSTEM WITH COMPLETE INITIAL CARDHOLDER DATABASE FROM OWNER.
- PROVIDE ADDRESSABLE ZONE MODULE RELAY(S) FROM FIRE ALARM SYSTEM FOR ACCESS CONTROL POWER SUPPLY FAILSAFE DOOR POWER DROP OUT.
- ALL INTERIOR CEILING CAMERAS SHALL BE FLUSH MOUNTED WHERE POSSIBLE.
- VIDEO RECORDER SHALL BE CONNECTED TO LAN FOR REMOTE VIEWING CAPABILITY
- ALL CCTV CAMERA CABLES SHALL ORIGINATE AT THE CAMERA, AND SHALL TERMINATE AT THE CLOSEST LAN ROOM ON A DATA PATCH PANEL.
- PROVIDE VMS IMAGE STORAGE PER SPEC.
- ALL SECURITY ITEMS SHOWN SHALL BE PROVIDED BY DIVISION 28, WITH THE FOLLOWING EXCEPTIONS:
 - DOOR LOCKING HARDWARE PROVIDED BY DIVISION 8.
 - DOOR LOCK POWER SUPPLIES (FOR LATCH-RETRACTION LOCKSETS) SHALL BE PROVIDED BY DIVISION 8.
 - ELECTRICAL CONDUIT, ELECTRICAL BOXES, AND AC POWER PROVISIONS BY DIVISION 26.

**1 SECURITY EQUIPMENT LIST
NTS**



Project:
JOINT HEALTH SCIENCES CENTER

Prepared For:
**Rowan University - Rutgers Camden
Board of Governors
200 Federal Street, Suite 300
Camden, NJ 08103
Contract No: 16.07011.00**



HOK
One Logan Square, Suite 1510
Philadelphia, PA 19103 USA
r +1 215 940 3570 f +1 215 940 3571

All reproduction & intellectual property rights reserved © 2016



J. F. McKernan Jr. Architects & Assoc., LLC
100 Dobbins Lane, Suite 204
Cherry Hill, NJ 08034



R.G. Vanderweil Engineers, LLP
101 Groves Mill Road
Lawrenceville, NJ 08648



Michael A. Beach & Associates
205 Birchfield Drive
Mount Laurel, NJ 08054

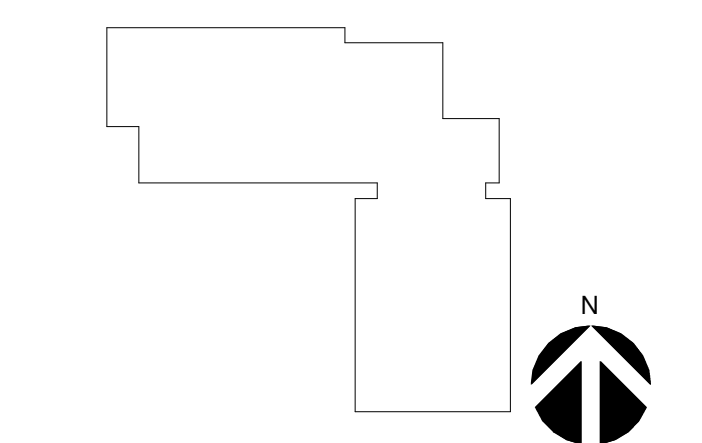


Pennoni
515 Grove Street, Suite 1B
Haddon Heights, NJ 08035



Colin Gordon Associates
150 N. Hill Dr., Suite 115
Brisbane, CA 94005

Key Plan



Professional Seals

No.	Description	Date
1	ADDENDUM #2	08/16/17

Drawn by: KP Reviewed by: RL
Project No: 16.07011.00

ADDENDUM #2 - 08-18-2017

Sheet Title
SECURITY DETAILS

Original drawing is 42 x 30. Do not scale contents of this drawing.

Sheet Number

SE402